

Project Impactor: On Location

On line pipe replacement in Clinton, Tennessee



Project Details

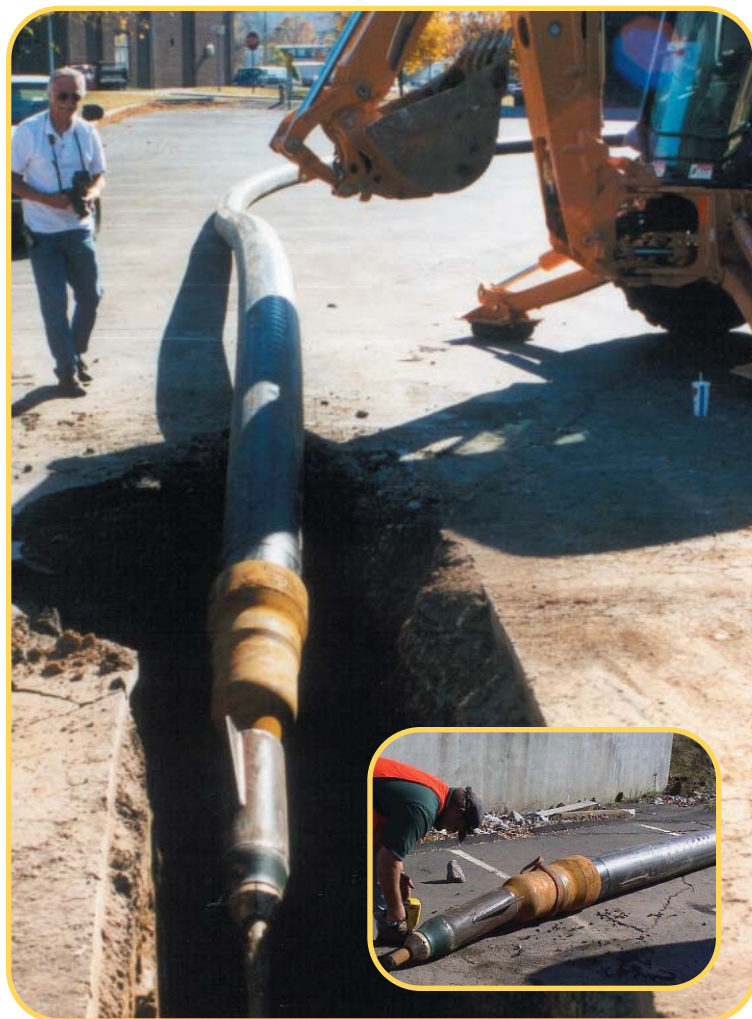
Contractors	Underground Technologies
Date	November 6, 2001
Project	Sewer main replacement, Clinton, Tennessee
Specifications	380' of 10" clay tile replaced with 380 feet of 12" HDPE
Equipment	12" Air Impactor™ and Vermeer® Navigator® D33x44 Horizontal Directional Drill
Production Rate	5 feet per minute including rod changes

Vermeer Impactor - Dateline Tuesday, 6 November 2001, Clinton, Tennessee. Underground Technologies tested the new 12" Air Impactor by replacing 380 feet of 10" clay pipe with 12" HDPE. Owner Doug Dailey and his crew were on site to get the job done. Curt Kopaceck, Vermeer Tennessee, Scott Kilgore, ETC Pipe Bursting Specialist, and Jeff Wage were on site to assist. An additional 200 feet is scheduled for replacement. More soon!



Left: Starting the pullback. 380' and 1.5 hours later the burst was complete. Inset: Connecting the Impactor to the drill stem prior to pullback.

Above: Equipment setup in parking lot with exit manhole in foreground. Inset: Drilling through the back of the manhole with TriHawk® I drill bit, through the old pipe, and then into the entry pit.



HammerHead Product Support

Toll Free 800.331.6653 (USA ONLY) • +1 262.567.8833 (International)
www.hammerheadmole.com

Vermeer Manufacturing Company

PH: 641.628.3141 • Toll Free 888.837.6337 (USA ONLY)
www.vermeer.com

Europe, Middle East and Africa

PH: +31 113 272700 • FX: +31 113 272727