

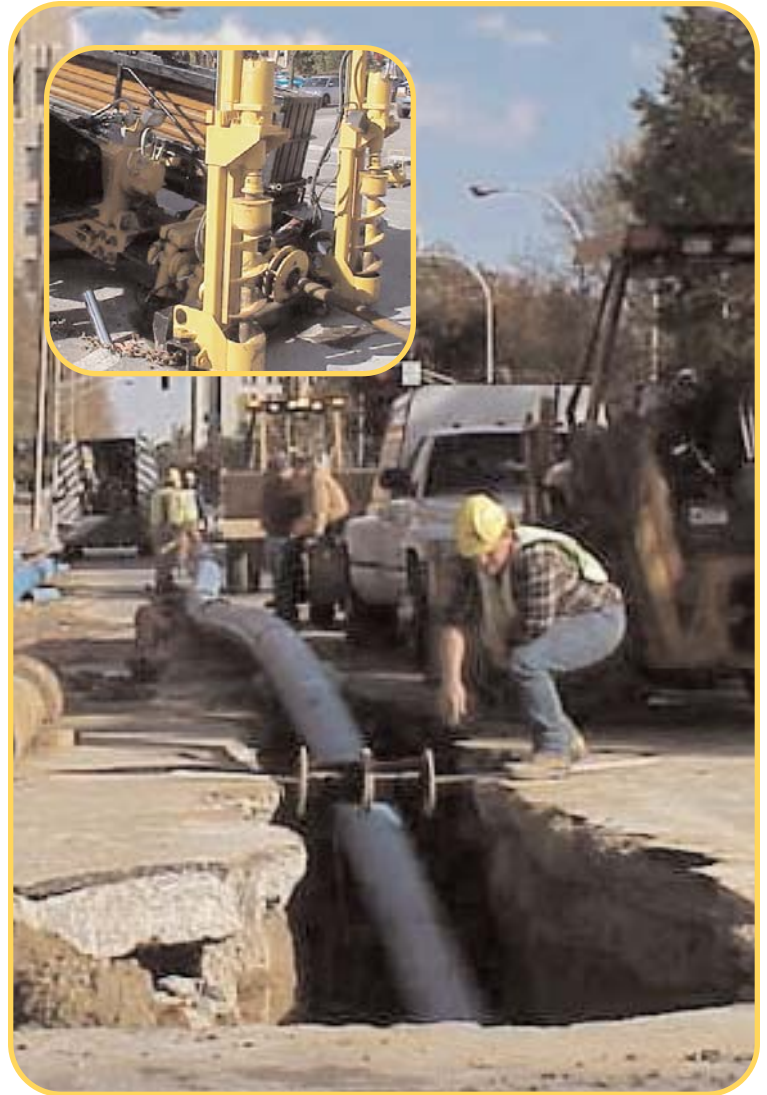
# Project Impactor: On Location

On Line Pipe Replacement in Louisville, Kentucky



## Project Details

Contractors	M-A Construction
Date	October 25-26, 2001
Project	Water Main Replacement, Louisville, KY, Jefferson Technical College
Specifications	600' of 12" cast iron water main replaced with 600' of 12" HDPE (3 pulls of 200')
Equipment	12" Air Impactor™ and Vermeer® Navigator® D33x44 Horizontal Directional Drill
Production Rate	Average of 5' per minute in sand backfill.



**Above:** Beginning to pull in the new 12" pipe. **Inset:** Marvin Sailor (Vermeer of Kentucky), drilling out through the old water main. **Top left:** Slicing through a huge cast iron bell. **Bottom left:** The end of the line.



### HammerHead Product Support

Toll Free 800.331.6653 (USA ONLY) • +1 262.567.8833 (International)  
[www.hammerheadmole.com](http://www.hammerheadmole.com)

### Vermeer Manufacturing Company

PH: 641.628.3141 • Toll Free 888.837.6337 (USA ONLY)  
[www.vermeer.com](http://www.vermeer.com)

### Europe, Middle East and Africa

PH: +31 113 272700 • FX: +31 113 272727